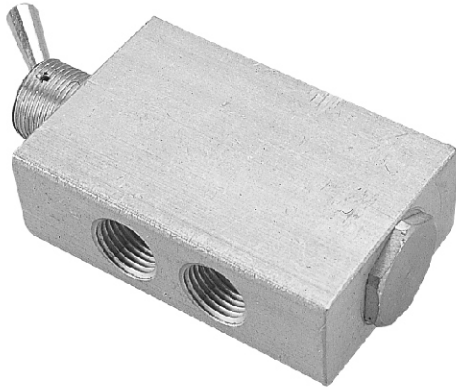


MVHF-5V

MECHANICAL VALVES



Specification:

| Type | 4-way spool valve toggle actuated two position 5 ported |
|----------------------------|--|
| Medium | Air, water, oil |
| Arc of travel | 80° |
| Input pressure | 150 psig max. |
| Effective orifice | 4.3 mm ² |
| Force for full stem travel | 3 oz. nominal |
| Temperature range | 32°F~230°F |
| Ports | Input: 1/8" BSP Output: 1/8" BSP Exhaust: 1/8" BSP |
| Mounting | 15/32-32 male thread nuts and lock washers furnished |
| Weight | 172 g |

※ Port thread NPT. are also available.

